

*Turn To The Industry Experts*

## CART'S INSTRUCTION MANUAL

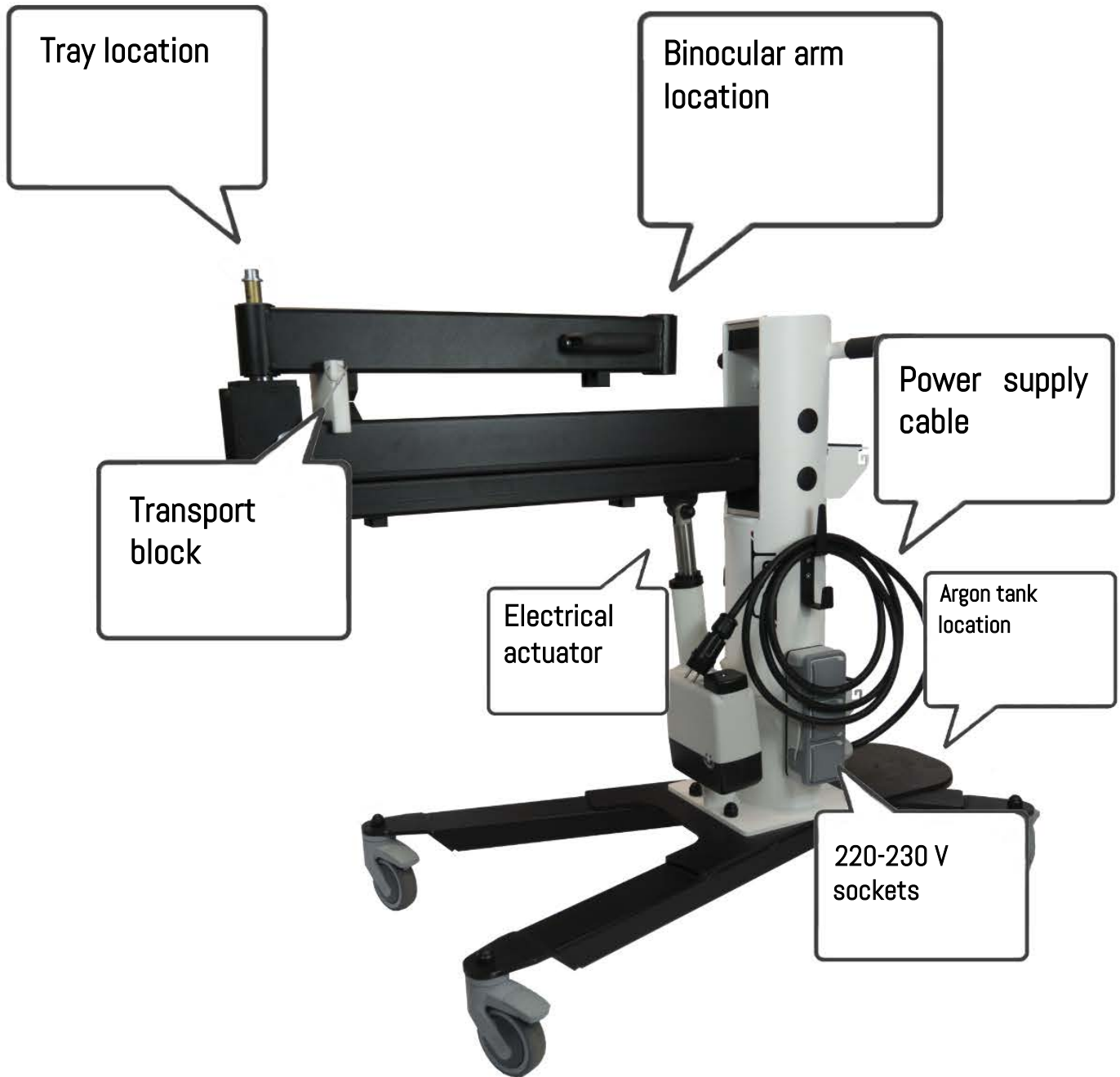


\_\_\_\_\_ MICROWELDING \_\_\_\_\_  
Innovative solutions for Microwelding - Welding and Marking

# Table of contents

CART'S GENERAL DESCRIPTION.....	1
DESCRIPTION OF THE PARTS TO BE ASSEMBLED.....	2-3
NECESSARY TOOLS.....	4
ASSEMBLY.....	5
1.0    PACKAGING AT RECEPTION.....	5
2.0    TRAY ASSEMBLY.....	6
3.0    INSTALLATION OF THE LASE ONE GENERATOR.....	6
a)    FIXING TO THE TRAY.....	7
b)    PASSAGE OF THE GENERATOR POWER CABLE.....	7
c)    ELECTRICAL CONNECTION.....	8
4.0    REMOTE CONTROL CONNECTION.....	9
5.0    ELECTRICAL CONNECTION.....	9
6.0    RELEASE OF THE TRANSPORT BLOCK.....	10
7.0    INSTALLATION OF THE BINOCULAR ARM.....	11
a)    PIVOT POSITIONING.....	11
b)    FIXING.....	11
c)    PASSAGE OF THE CABLE.....	11-12
8.0    CHAINS INSTALLATION / ARGON TANK.....	12
a)    FIXING WITH CHAINS.....	12
b)    POSITIONING OF THE ARGON TANK.....	12
c)    FIXING WITH SAFETY HOOKS.....	13

## CART'S GENERAL DESCRIPTION



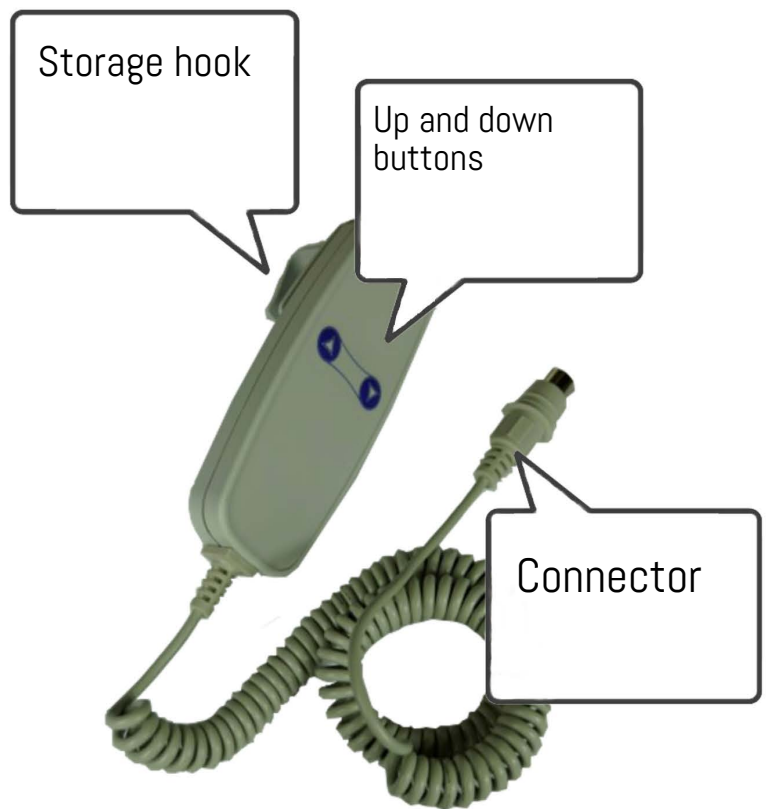
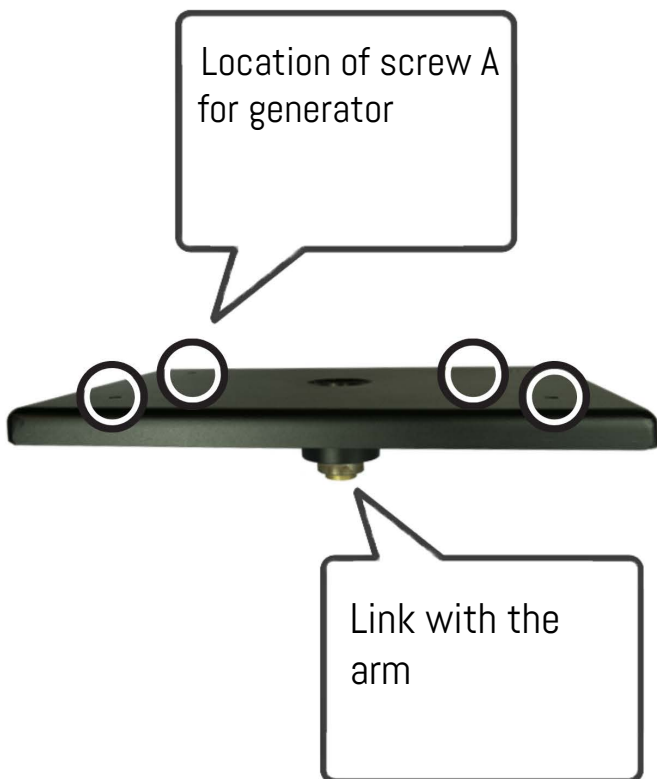
## DESCRIPTION OF THE PARTS TO BE ASSEMBLED

### The tray

The generator is attached to the tray using the four screw slots.

### The remote control

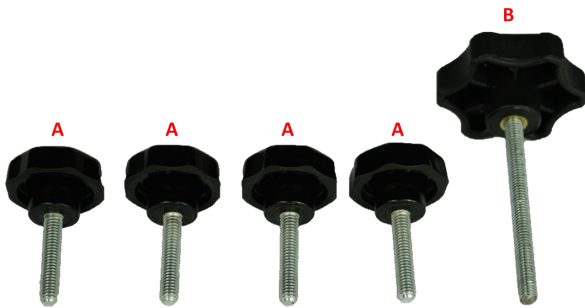
The remote control allows the elevation of the electrical actuator arm.



## Screws

Screw A : fixing the generator on the Cart tray.

Screw B : holding the pivot of the binocular arm in the Cart arm.



## Chains

The argon gas tank is fixed by chains.



## NECESSARY TOOLS : THE SPANNERS

Allen 10



Torx 25



## ASSEMBLY

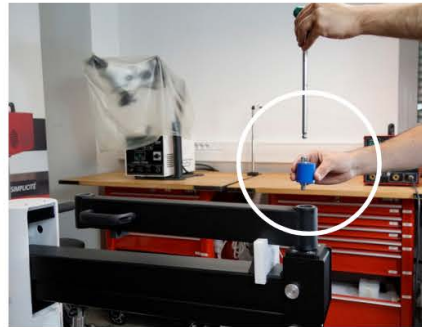
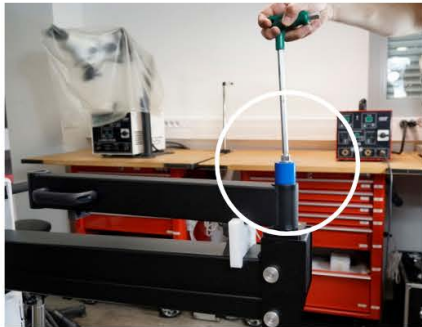
### 1.0 PACKAGING AT RECEPTION





## 2.0 / TRAY ASSEMBLY

Remove the colored flange intended for transport only.



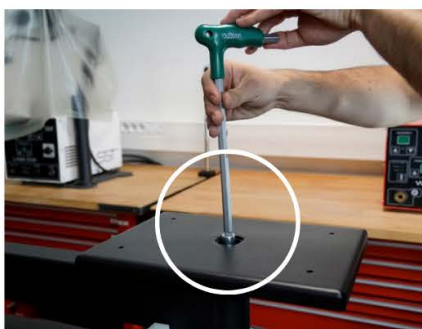
Position the tray.



Put the spacer and the screw in place.



Tighten the screw with tool **1**.





### 3.0 / INSTALLATION OF THE LASE ONE GENERATOR

#### a) FIXING TO THE TRAY

Place the generator on the tray and fix it with the screws A.



#### b) PASSAGE OF THE GENERATOR POWER CABLE

Remove the cable clamps with tool 2.



Insert the cables (generator power, gas) through the cable clamps.



Fix the cable clamps back on the swinging arm.



**FLANGE 1**



**FLANGE 2**

### c) ELECTRICAL CONNECTION

Connect the power supply cable from the generator to one of the 220-230 V sockets on the CART.



## 4.0 / REMOTE CONTROL CONNECTION

Connect the remote control to the CART.



Put the remote control in its location.



## 5.0 / ELECTRICAL CONNECTION

Plug the CART power supply cable to a 220V socket.





## 6.0 /RELEASE OF THE TRANSPORT BLOCK

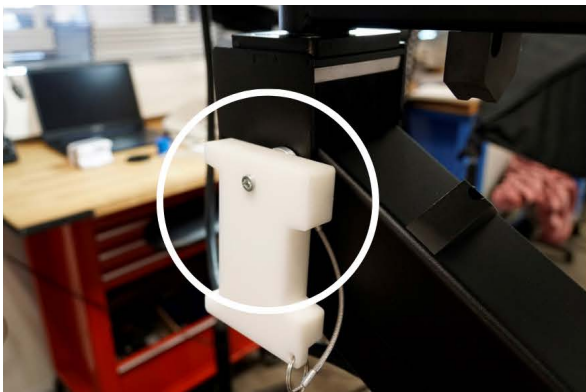
Raise the arm with the remote control to release the transport block.



When moving the CART, remove the transport wedge, which fixes the CART arm horizontally.



Put the transport block away.



⚠ Don't activate the electrical actuator down.

## 7.0 / INSTALLATION OF THE BINOCULAR ARM

### a) PIVOT POSITIONING

Position the binocular arm.



### b) FIXING

Tighten the screw B to hold the binocular arm pivot.



### c) PASSAGE OF THE CABLE

Remove the cable clamps with tool 2 and pass the cable through the cable clamps.



c) PASSAGE OF THE CABLE (continued)

Screw the cable clamps on the CART arm.



8.0 /CHAINS INSTALLATION / ARGON TANK

a) FIXING WITH CHAINS

Insert the chains in the hooks.



b) POSITIONING OF THE ARGON TANK

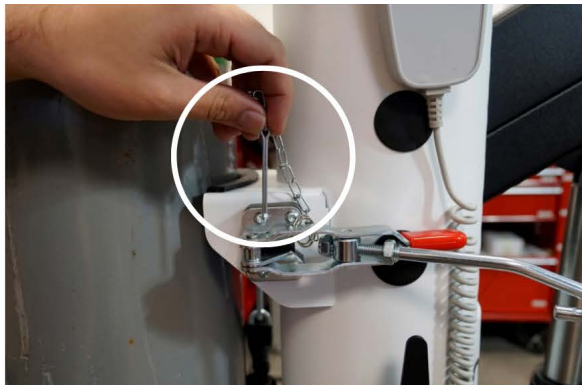
Put the argon tank on its location.





### c) FIXING WITH SAFETY HOOKS

Unlock the tension levers by removing the pins and pass the chain link through the hook.



\* choose the right link to obtain a sufficient tension of the chain (to sharpen use the screw adjustment of the lever)

\*\* direction as shown on the picture

Stretch the chains with the tensioning levers and block them with the pins.





Your CART is ready !



**PCS**  
**COMPANY**

*Turn To The Industry Experts*